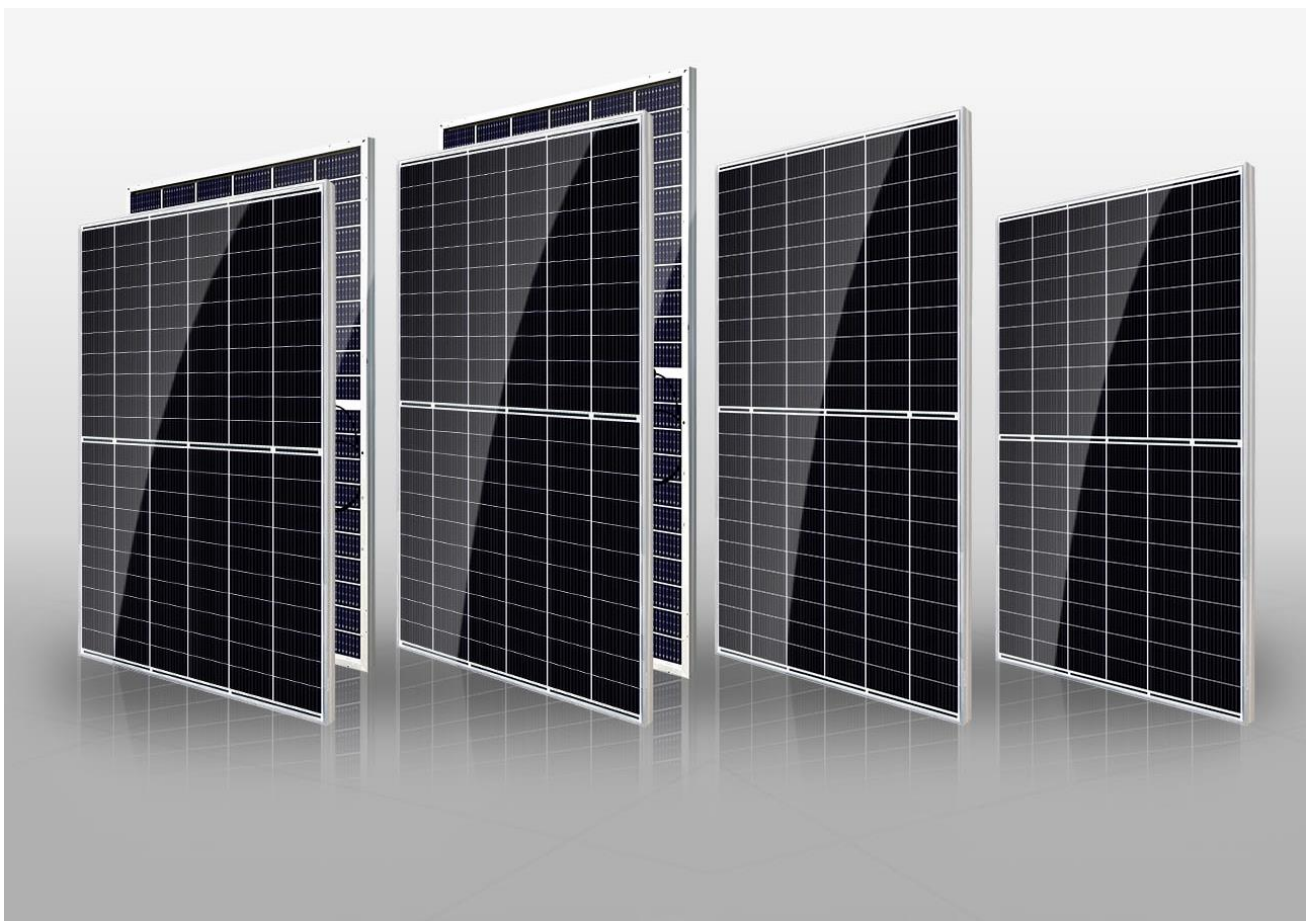


# LEADING THE NEW ERA OF 600W+ MODULES

CANADIAN SOLAR  
HiKu7 & BiHiKu7  
UNPACKING INSTRUCTIONS

**HiKu7 & BiHiKu7 – UP TO 670 W**



**Step  
00****Special instructions before unpacking**

CS7N & CS7L modules are packed vertically using an innovative packaging system. Please pay special attention:

- 1) For the roof projects: it is not allowed to carry the whole original package onto the roof. Please unpack the pallet, pick the module out one by one and then can carry them to the roof horizontally by the plans A or B shown as below, or other plans which ensure modules safe .

**Plan A****Plan B**


- 2) For all kinds of projects: it is recommended to strictly abide the unpacking steps as follows.

**Step  
01**


**Place pallets on flat ground**

CS7N & CS7L modules are packed vertically using an innovative packaging system. Please place pallets on flat ground. The inclination of the ground should not exceed 4°.



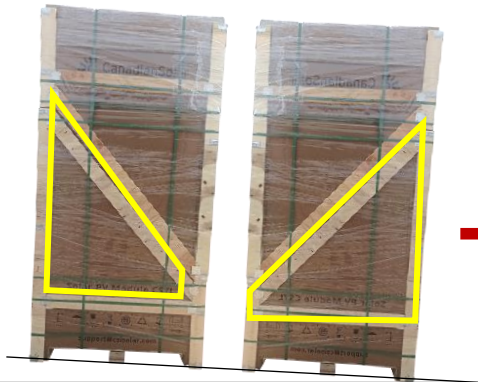
Flat ground 



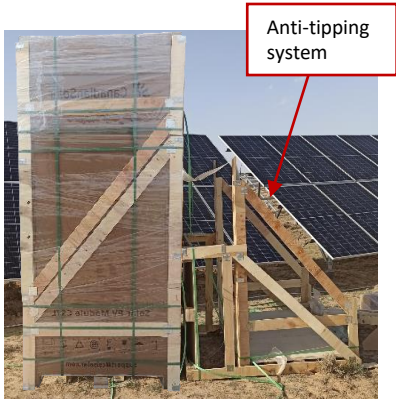
Inclination > 4° 

**Unpack with anti-tipping bracket when the inclination is 0° < Angle ≤ 4°**

Please place the pallets in the right direction (shown as below) and use an anti-tipping system to ensure the safety of the modules. Please check the details in appendix 01.



Support with wooden bracket



Anti-tipping system

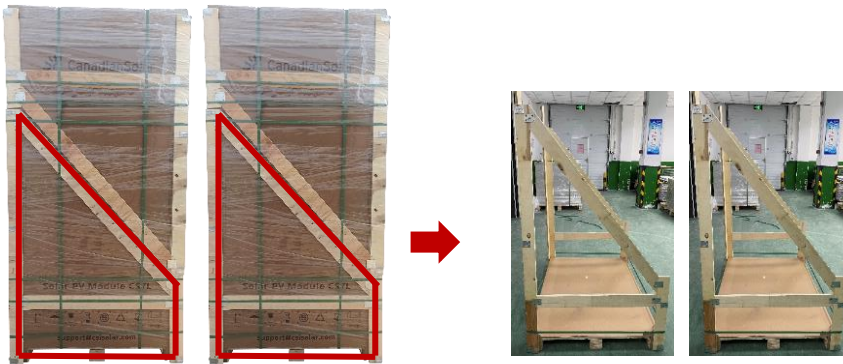
Anti-tipping group onsite picture

Place the pallet in right direction (the lower wooden fence leaning downwards)

**Appendix  
Step  
01**

**Simple anti-tipping beams making process**

Two wooden beams are needed to assemble the overturning protection. After carefully unpacking the first two pallets on a flat ground, two wooden brackets/beams will remain.



2 pallets of modules

2 wooden beams

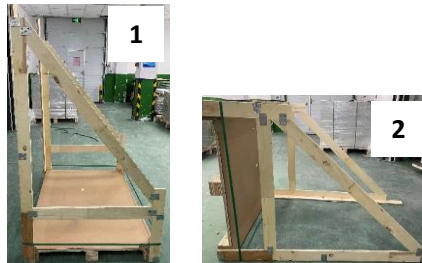
**Assembly process:**

1)



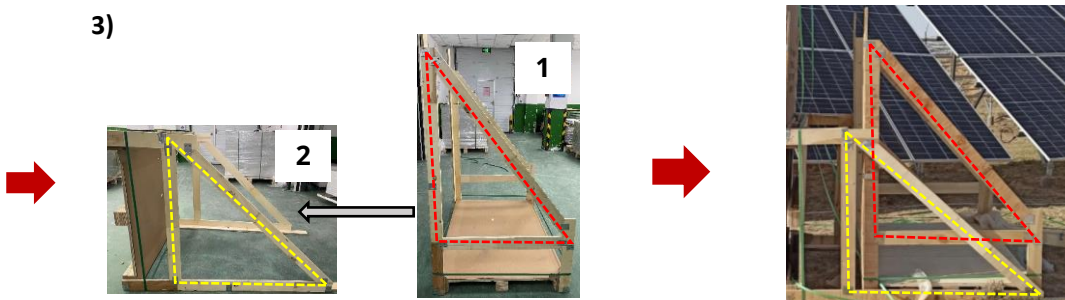
2 wooden beams

2)



One of the leftover wooden brackets remains in the original direction while the other needs to be turned 90°.

3)



Insert bracket 1 into bracket 2.

The anti-tipping bracket is ready



## Step 02

### Tear off the box shrink-wrap film

Tear off all the shrink-wrap film covering the box



Attention:

- Please wear gloves to prevent injuries.
- Please remove the shrink-wrap film with care and avoid pulling with excessive force.
- Unpacking operation shall not be carried out over wind force 6 (Strong Breeze, 10.8-13.8 m/s).

## Step 03

### Remove outer packaging straps

Cut off the packing straps on the outside of the packing box, except the last 2 on the bottom.



**Do not remove!**

Attention:

- Please wear gloves to prevent injuries.
- Please make sure the bottom two straps remain uncut.
- Please pay attention when cutting off the straps to avoid it from springing back to avoid personal injury.

# Step 04

## Remove the upper wooden beams and box top cover

The wooden edge protection is divided into two parts: upper and lower. Please remove the upper wood edge protection, keep the lower wood edge protection, and then remove the top cardboard box cover.



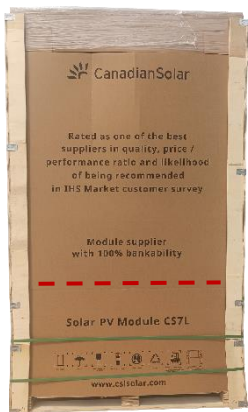
Attention:

- Please wear gloves to prevent injuries.
- Please note the wood edge protection is heavy. Refrain from letting it fall to the ground directly to avoid personal injury.
- It is recommended to remove the top cover with the help of one of the wooden brackets.

# Step 05

## Remove the upper carton

CS7N & CS7L products packaging uses a one-piece enclosure with a pre-cut line design. Please tear off the box along the pre-cut line and take off the upper part of the carton.



front view



side view



The starting point



Tear the package along the pre-cut line



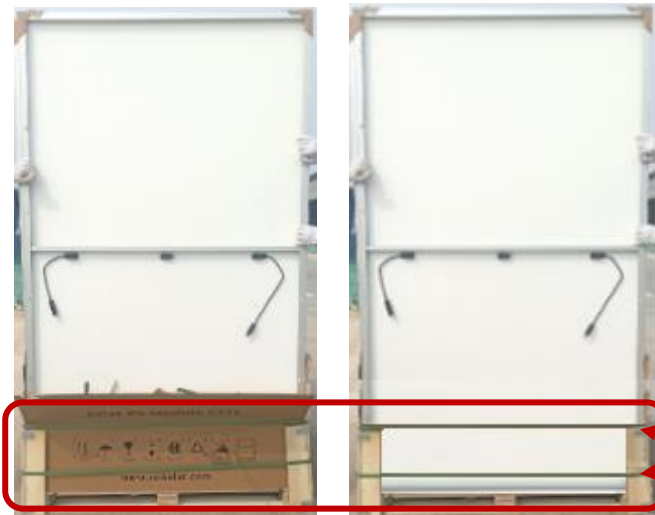
Appearance after removing the upper carton

Pre-cut line on package

## Step 06

### Remove the inner packing straps

Cut off all straps inside the package, including the bottom belt hidden by the box. **Do NOT remove the 2 straps on the outside of the packaging.**



Attention:

- Please wear gloves to prevent injuries.
- The lower cardboard can be removed. Behind it packing straps appear at the bottom. “

**Do not remove!**

## Step 07

### Tear off the anti-tipping tape: one by one

CS7N & CS7L module packaging comes along with an ultra-high viscosity tape on both sides to prevent the modules from falling while being unpacked.

Please remove the adhesive tape one by one so that only one module can be removed at a time before removing the tape from the next module.



Attention:

- Please wear gloves to prevent injuries.
- Please tear the tape to take only one module out at a time. Do not tear the tape on the next piece of module

## Step 08

### Take out the modules: one by one

Two workers are required to take modules out of the box. When handling modules always use both hands.



#### Attention:

- Please wear gloves to prevent injuries.
- It is recommended that two workers take out the modules from both sides of the packaging at the same time.
- The module packaging is tight. Please move the first module from left and right parallel to the short side of the module, pulling up while you move, carefully take out the first module.
- Need people to support the unpacking modules during the whole process.
- **Before taking out the last module, please cut off the two anti-tipping nylon tie between the installation hole and wooden beams.**
- Please install the modules right after unpacking. and install the modules in one time once opening the package. Do not leave a few pieces in the packing box for a long time.
- Sort out the empty packaging, separating the different materials for proper recycling.



**Step  
08****Take out the modules: one by one**

**If the whole package cannot be completed installation till end of the day, the remaining modules can be temporarily placed in the following ways:**

Two wooden pallets can be jointed as below, and carton can be padded above. Place the modules horizontally on the pallets. Please make sure the bottom module's front side is looking upwards, and the rest of the modules' back side downward. The number of stacked modules should be less than 12.

You can also order special pallet for 210 products for better transportation experience. For rooftop projects, if you need pallet to transport the modules to the roof, you need order special pallet for 210 products .



**Jointed by two pallets**



**Bottom module placed on the pallets**

- Please take photos and contact the local sales/customer service staff at first time if you encounter with damaged package or modules, and feedback to the service mailbox, [support@csisolar.com](mailto:support@csisolar.com) , thanks!
- If the customer does not unpack the module according to the steps specified in this manual, we shall not assume any responsibility for the personal and property damage.



Damaged package



Damaged module

## LEARN MORE



Scan to see how HiKu7 and BiHiKu7 modules are made and tested on YouTube



Facebook



Instagram



LinkedIn



Twitter

### Leading The New Era of 600W+ Modules Canadian Solar HiKu7 & BiHiKu7 Unpacking Instruction

CSI Solar Co., Ltd.

[www.csisolar.com](http://www.csisolar.com) [marketing@csisolar.com](mailto:marketing@csisolar.com)